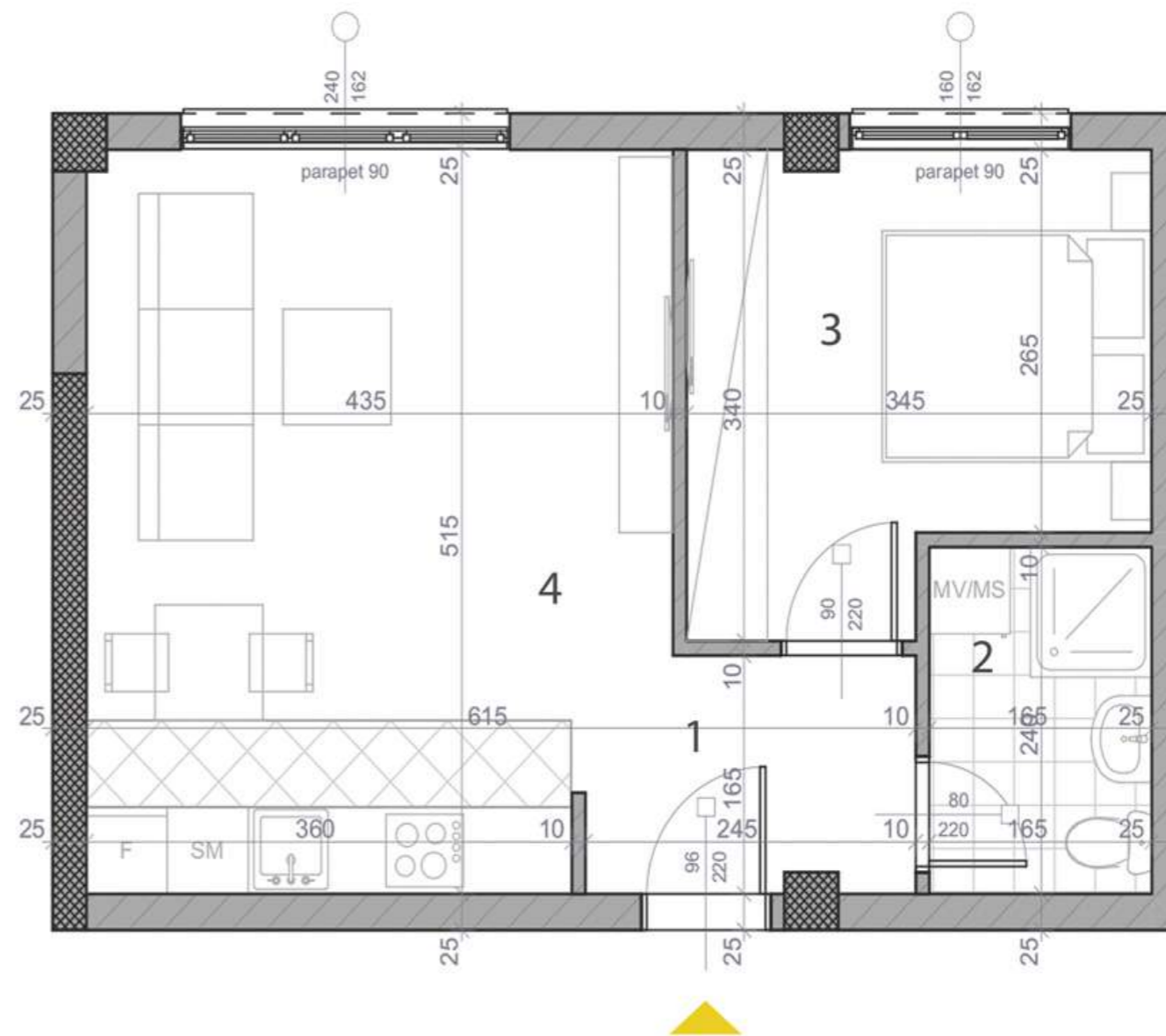


sprat 1/2/3 stan 1/12/23



1	HODNIK	3,90 m ²
2	KUPATILO	3,84 m ²
3	SPAVAĆA SOBA	10,07 m ²
4	DNEVNI BORAVAK, KUHINJA I TRPEZARIJA	20,60 m ²

NETO POVRŠINA: 38,41 m²

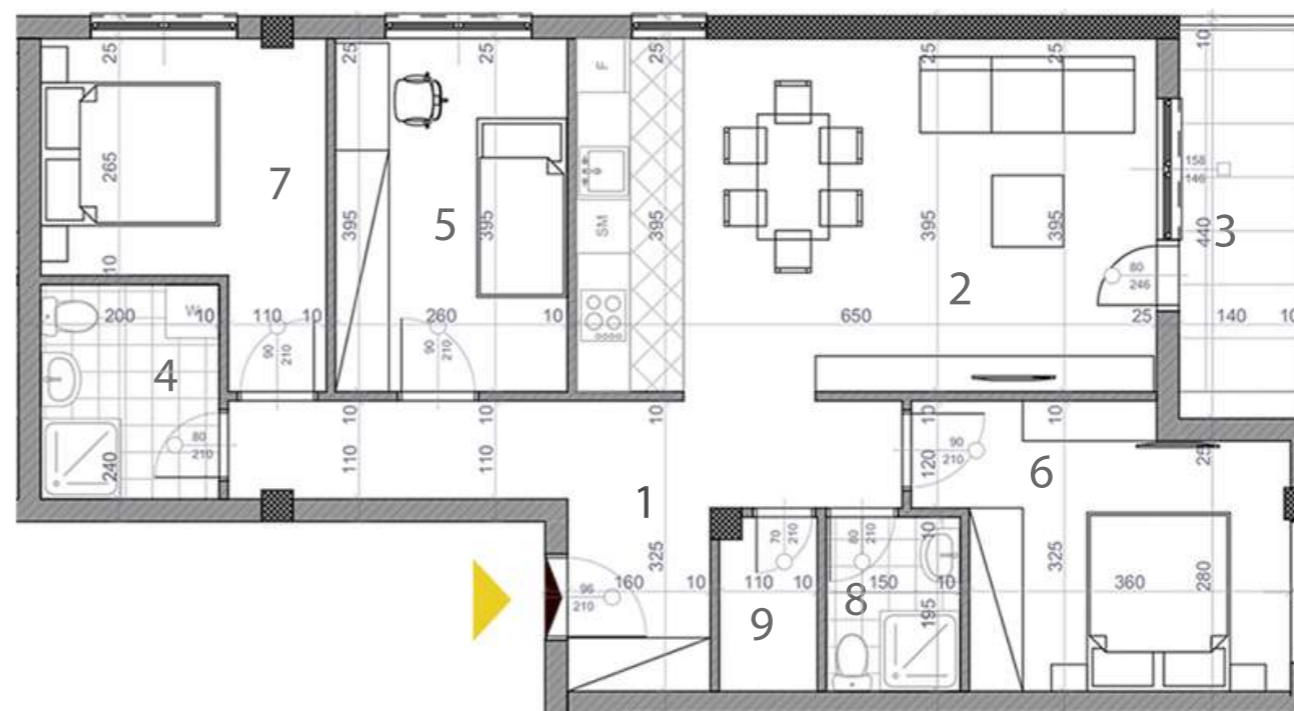


sprat 1/2/3 stan 2/13/24

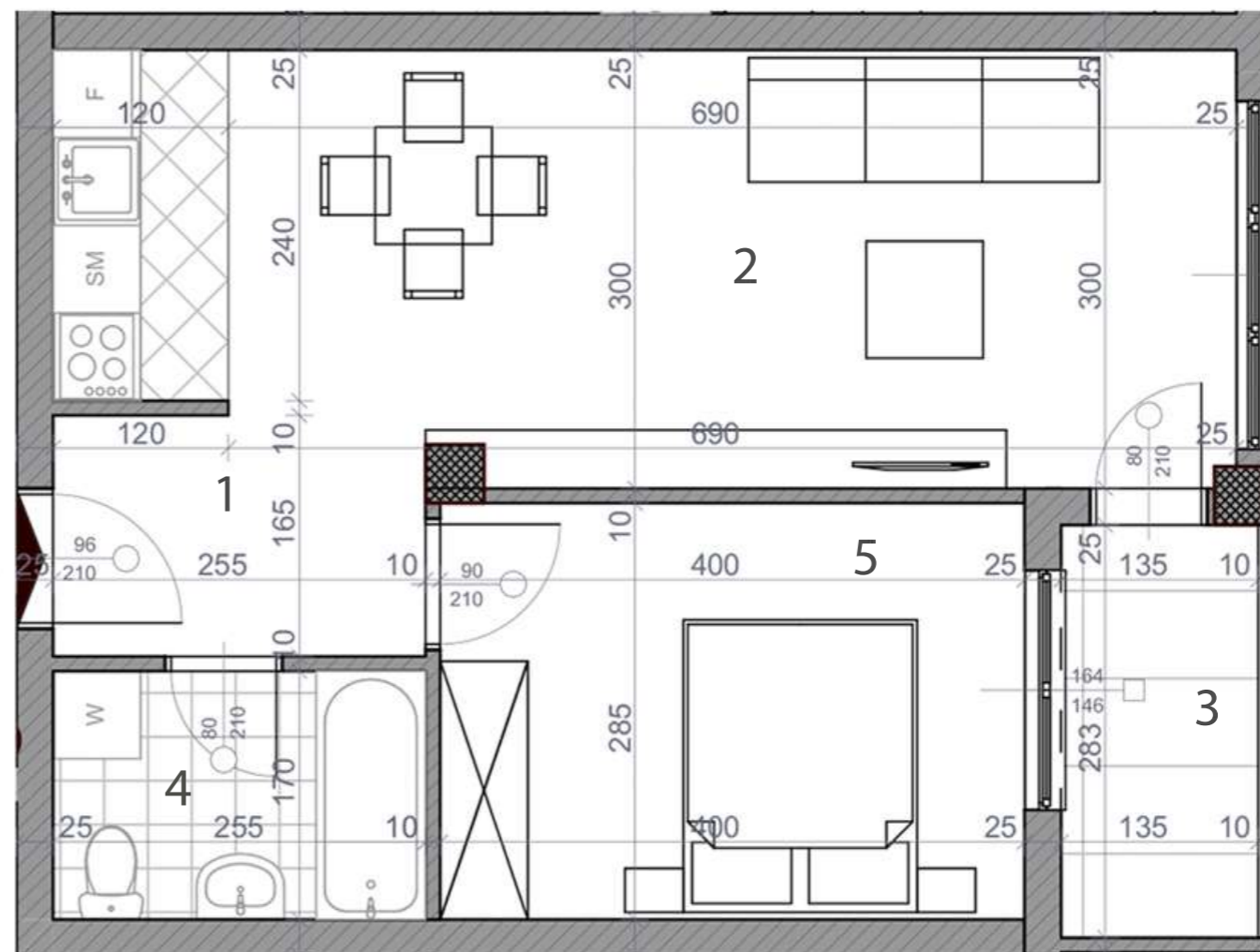


1	HODNIK	11,56 m ²
2	DNEVNI BORAVAK, KUHINJA I TRPEZARIJA	25,05 m ²
3	TERASA	5,98 m ²
4	KUPATILO 1	4,66 m ²
5	SOBA 1	9,55 m ²
6	SOBA 2	9,96 m ²
7	SOBA 3	11,39 m ²
8	KUPATILO 2	2,93 m ²
9	OSTAVA	1,90 m

NETO POVRŠINA: 82,97 m²



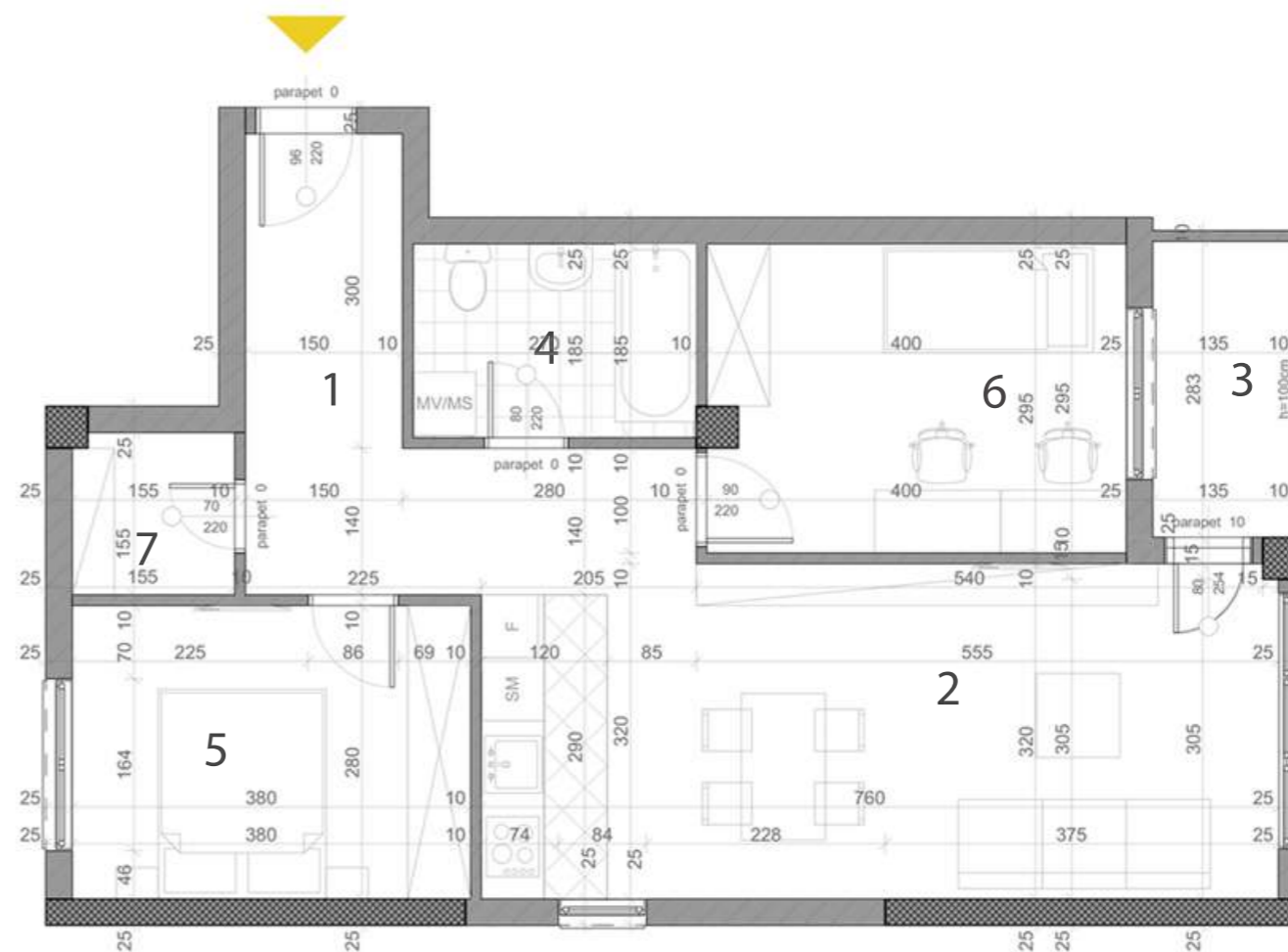
sprat 1/2/3 stan 3/14/25



1	HODNIK	4,08 m ²
2	DNEVNI BORAVAK, KUHINJA I TRPEZARIJA	22,08 m ²
3	TERASA	3,70 m ²
4	KUPATILO	4,20 m ²
5	SOBA	11,06 m ²

NETO POVRŠINA: 45,11 m²

sprat 1/2/3 stan 4/15/26



1	HODNIK	9,95 m ²
2	DNEVNI BORAVAK, KUHINJA I TRPEZARIJA	23,22 m ²
3	TERASA	3,70 m ²
4	KUPATILO	4,84 m ²

5	SOBA 1	10,32 m ²
6	SOBA 2	11,33 m ²
7	OSTAVA	2,10 m ²

NETO POVRŠINA: 65,47 m²

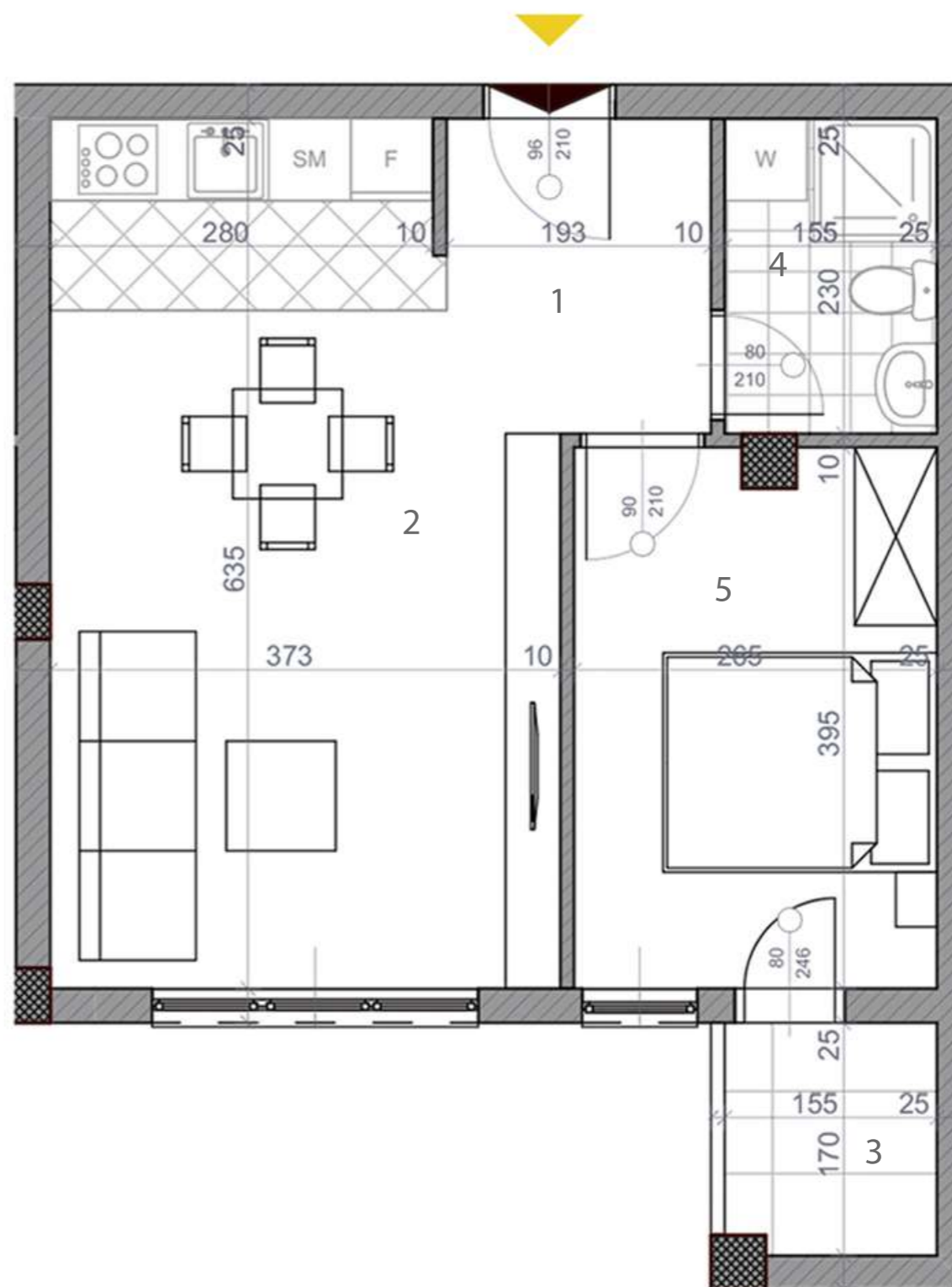
urban area

sprat 1/2/3 stan 5/16/27



1	HODNIK	4,63 m ²
2	DNEVNI BORAVAK, KUHINJA I TRPEZARIJA	19,82 m ²
3	TERASA	2,51 m ²
4	KUPATILO	3,80 m ²
5	SOBA	10,75 m ²

NETO POVRŠINA: 41,51 m²

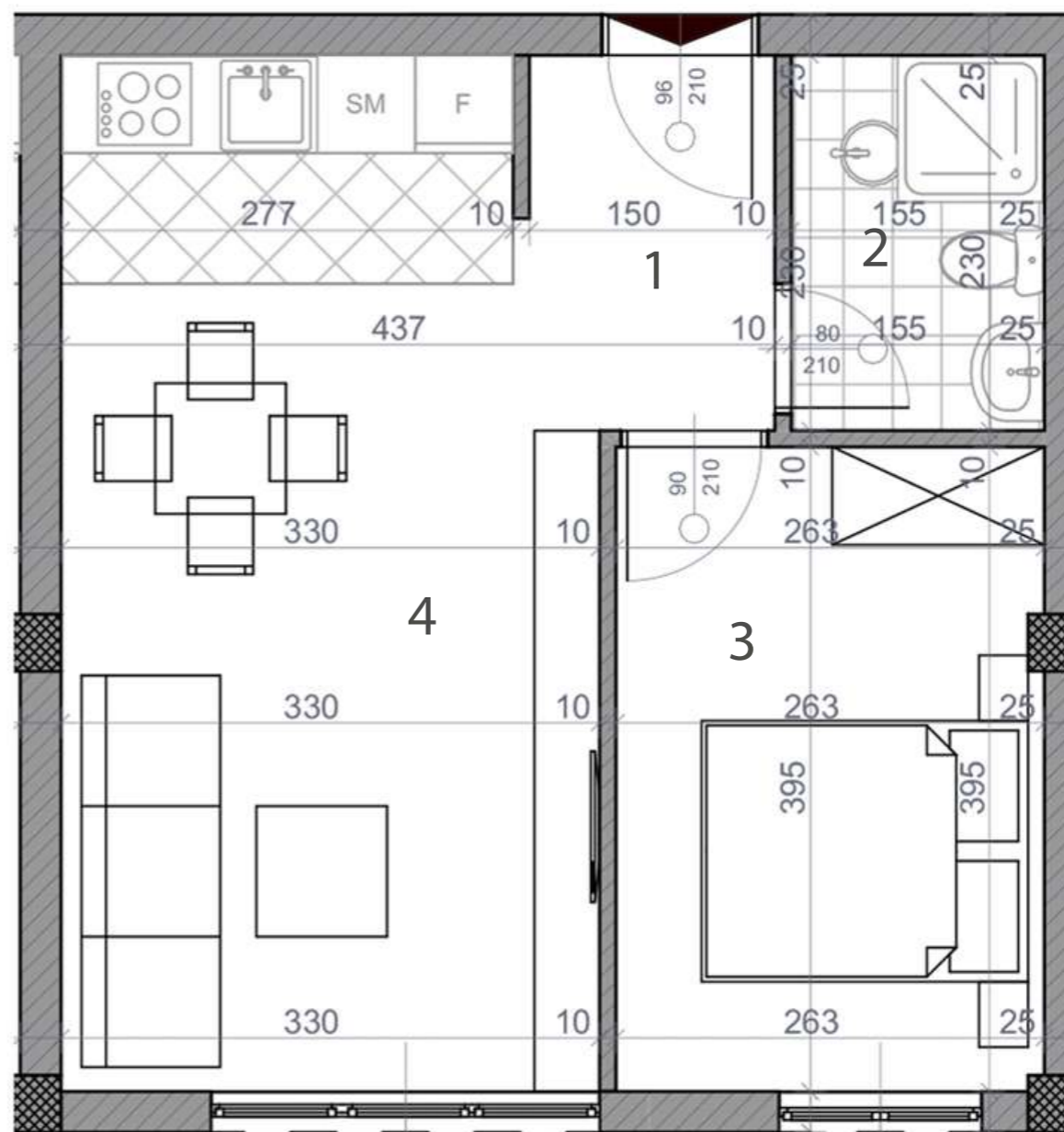


sprat 1/2/3 stan 6/17/28



1	HODNIK	3,90 m ²
2	KUPATILO	3,84 m ²
3	SPAVAĆA SOBA	10,07 m ²
4	DNEVNI BORAVAK, KUHINJA I TRPEZARIJA	20,60 m ²

NETO POVRŠINA: 36,05 m²



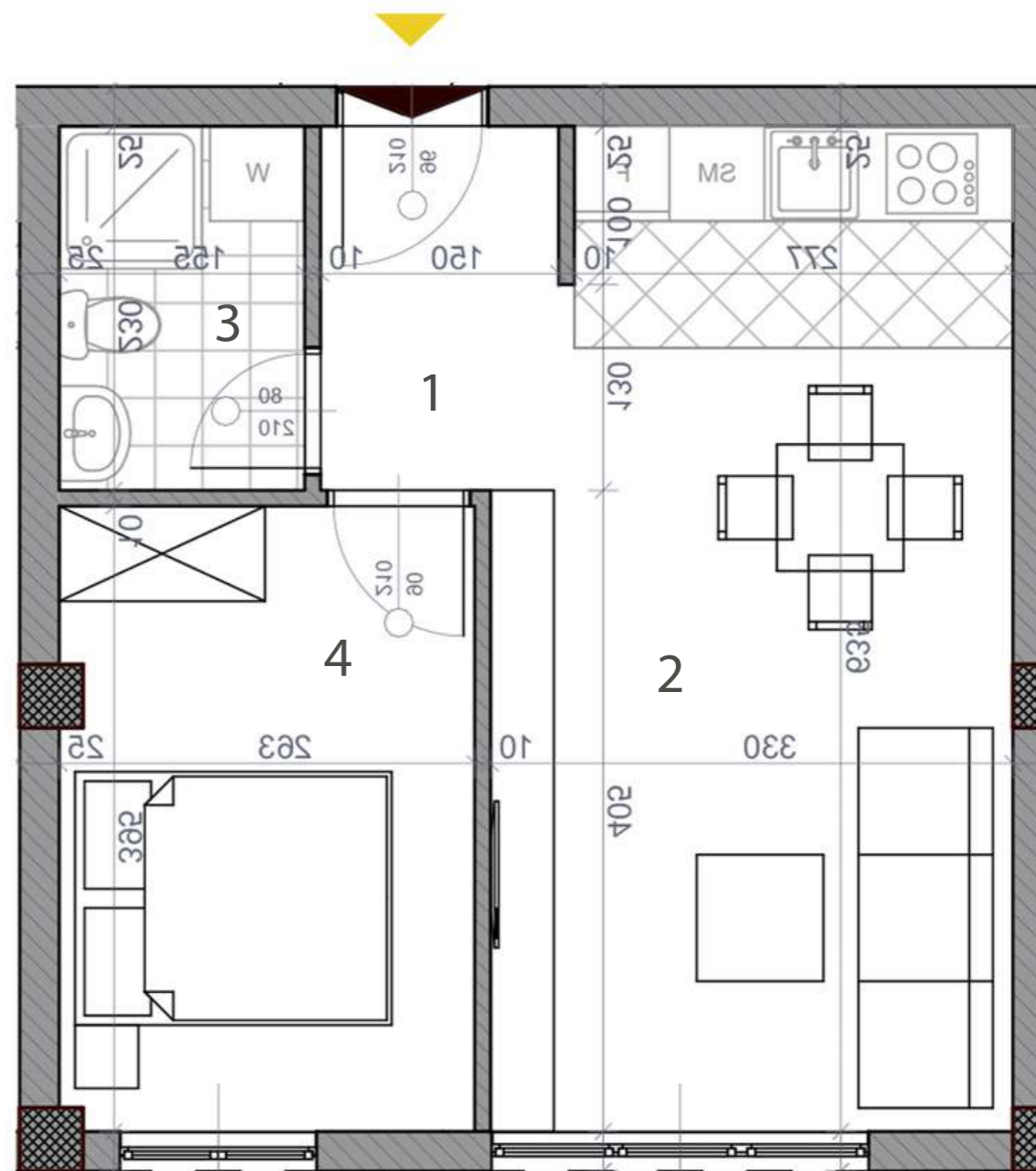


sprat 1/2/3 stan 7/18/29



1	HODNIK	3,86 m ²
2	DNEVNI BORAVAK, KUHINJA I TRPEZARIJA	18,85 m ²
3	KUPATILO	3,84 m ²
4	SPAVAĆA SOBA	10,27 m ²

NETO POVRŠINA: 36,82 m²



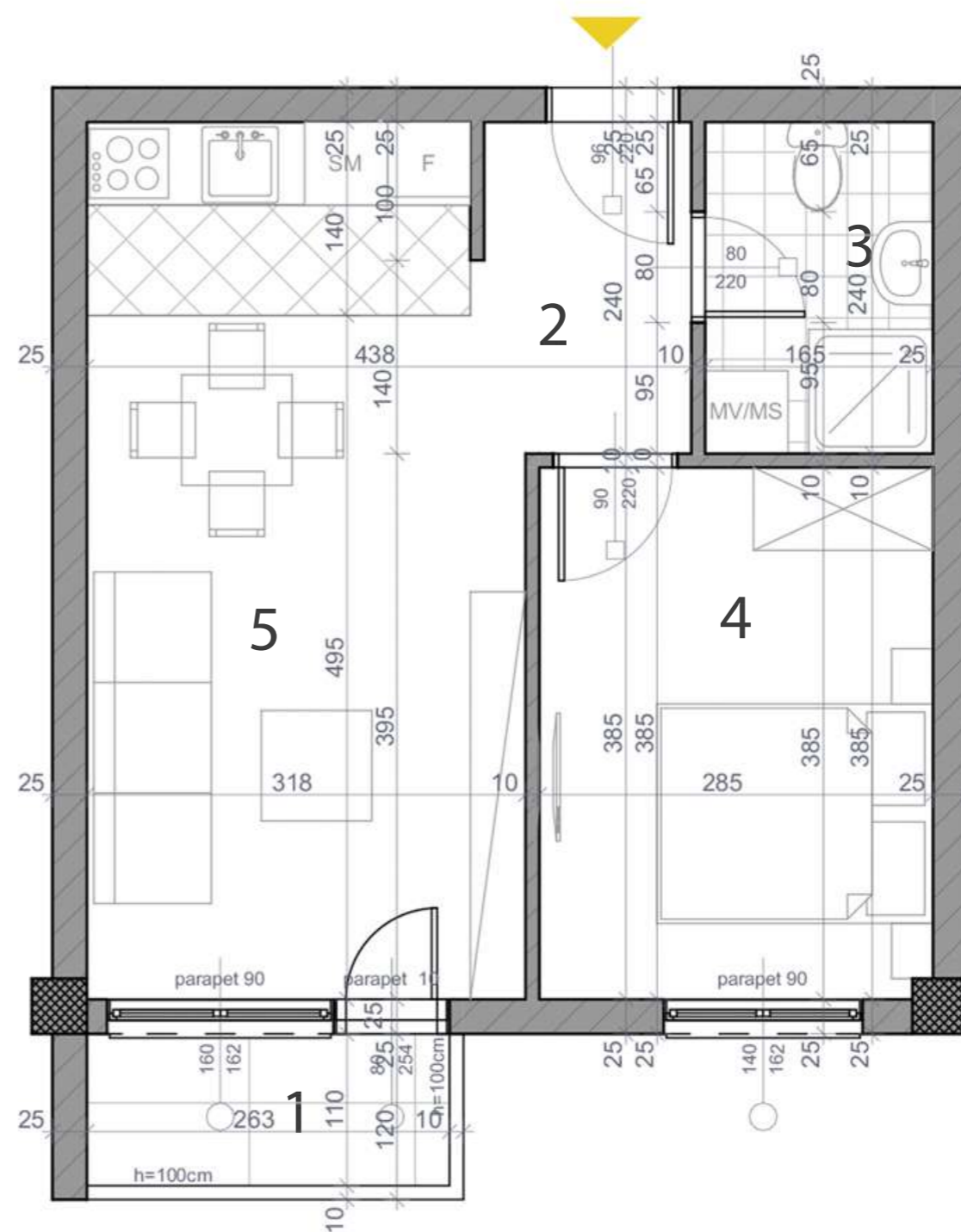
urban area

sprat 1/2/3 stan 8/19/30



1	TERASA	2,83 m ²
2	HODNIK	3,63 m ²
3	KUPATILO	3,84 m ²
4	SPAVAĆA SOBA	10,56 m ²
5	DNEVNI BORAVAK, KUHINJA I TRPEZARIJA	18,78 m ²

NETO POVRŠINA: 39,64 m²



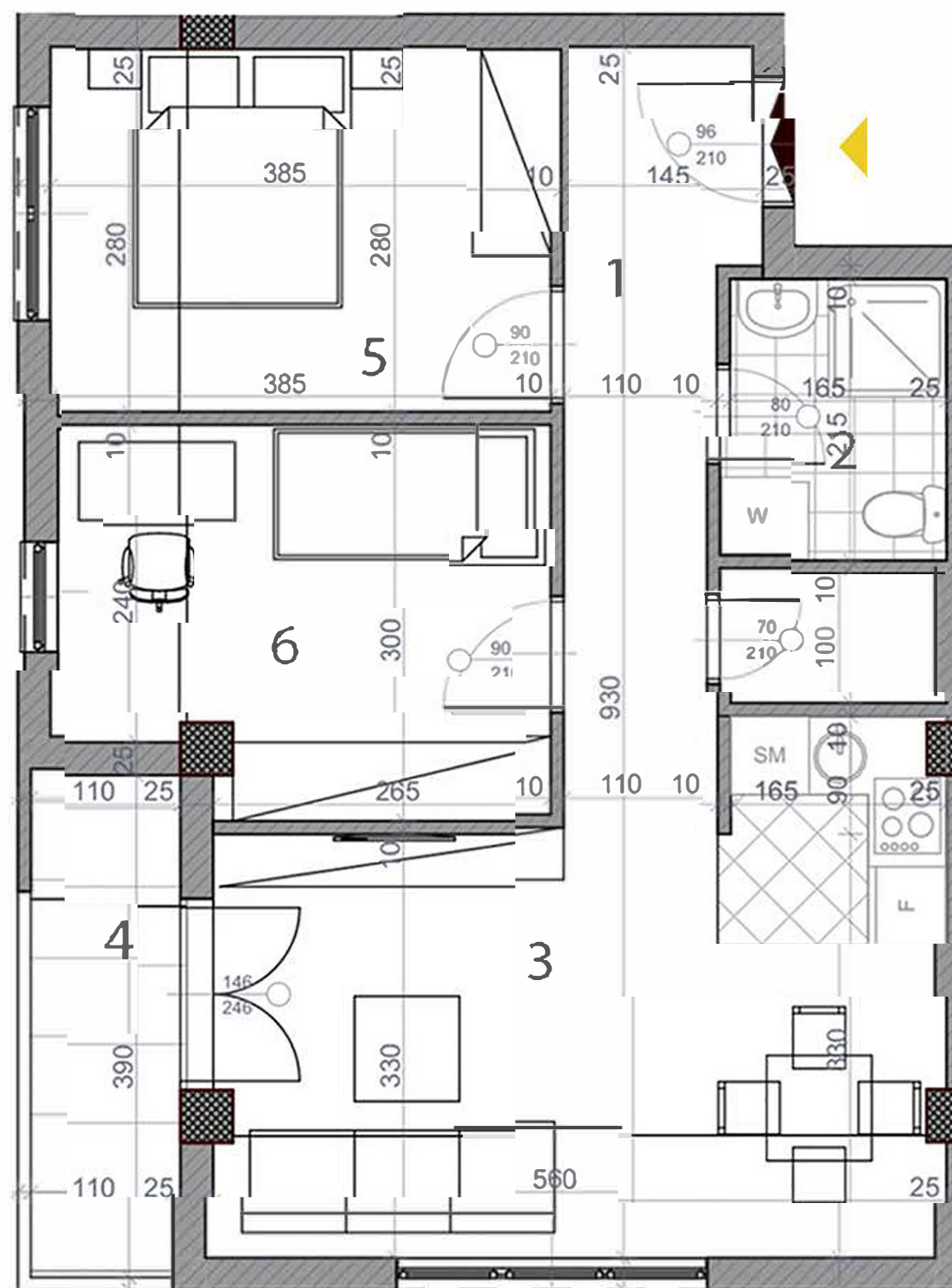
urban area

sprat 1/2/3 stan 9/20/31



1	HODNIK	6,96 m ²
2	KUPATILO	4,29 m ²
3	DNEVNI BORAVAK, KUHINJA I TRPEZARIJA	20,40 m ²
4	TERASA	4,16 m ²
5	SOBA 1	10,46 m ²
6	SOBA 2	10,41 m ²

NETO POVRŠINA: 56,68m²

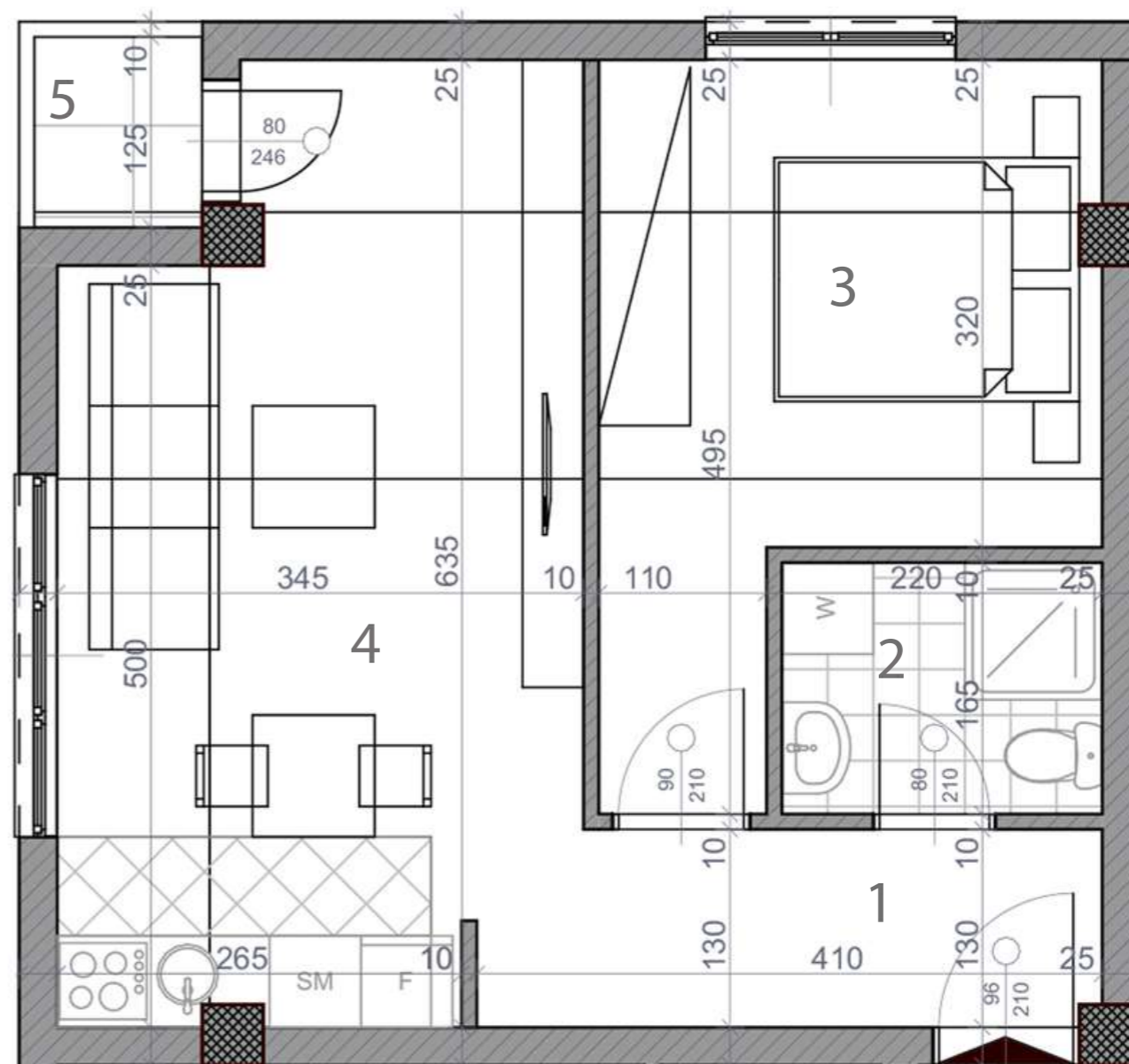


sprat 1/2/3 stan 10/21/32



1	HODNIK	5,31 m ²
2	KUPATILO	3,80 m ²
3	SPAVAĆA SOBA	11,72 m ²
4	DNEVNI BORAVAK, KUHINJA I TRPEZARIJA	18,49m ²
5	TERASA	1,34 m ²

NETO POVRŠINA: 40,65 m²

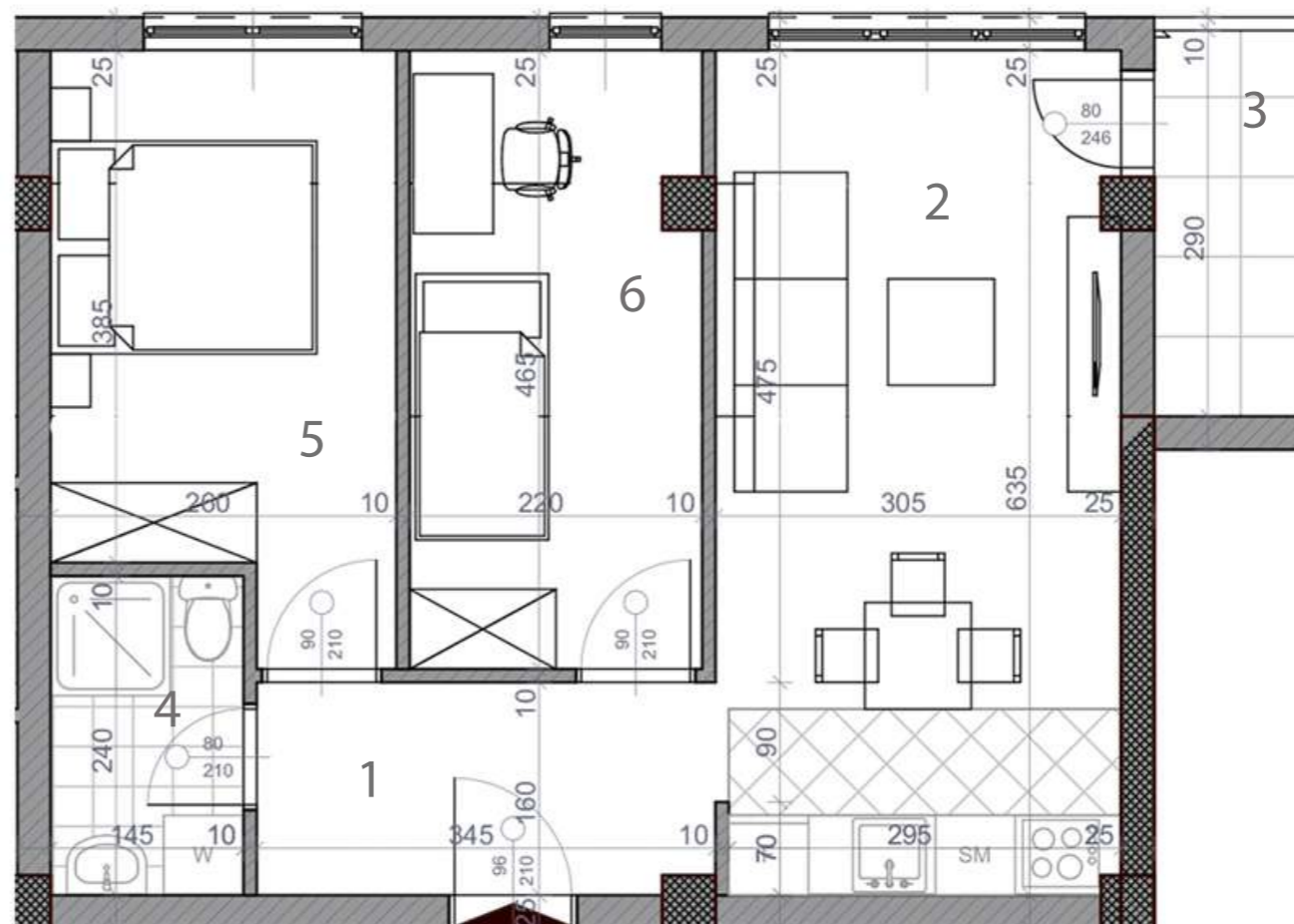


sprat 1/2/3 stan 11/22/33

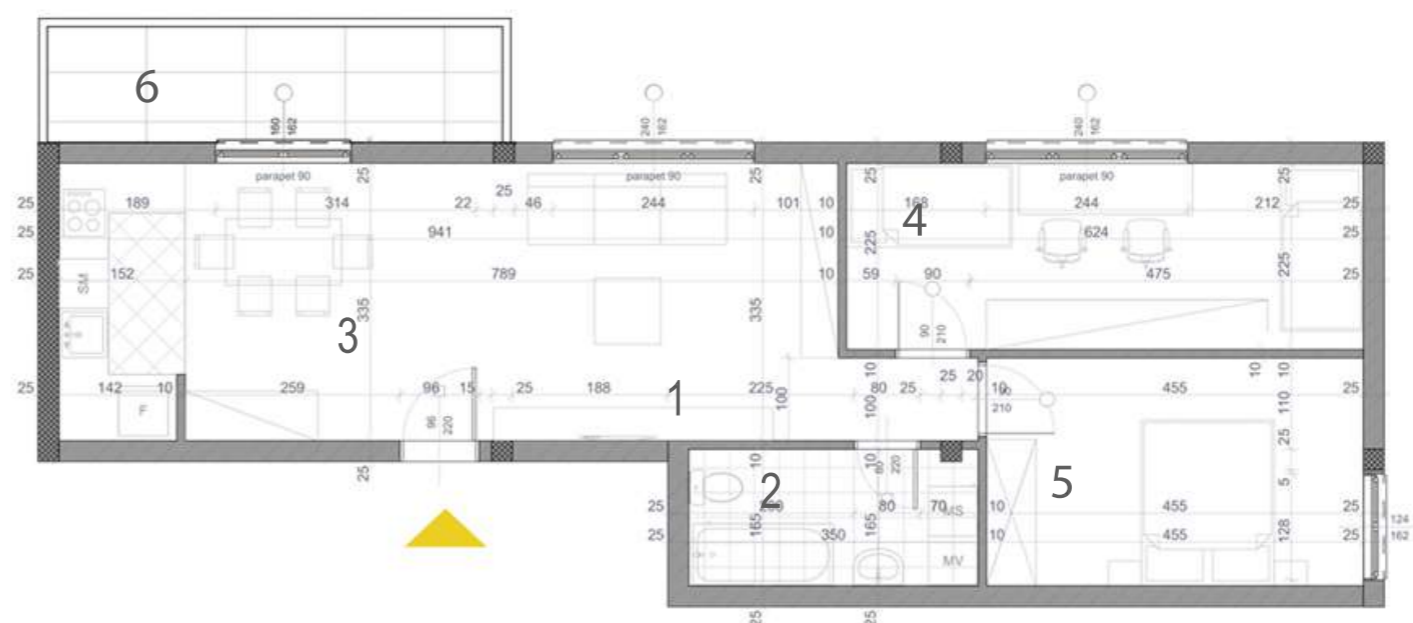
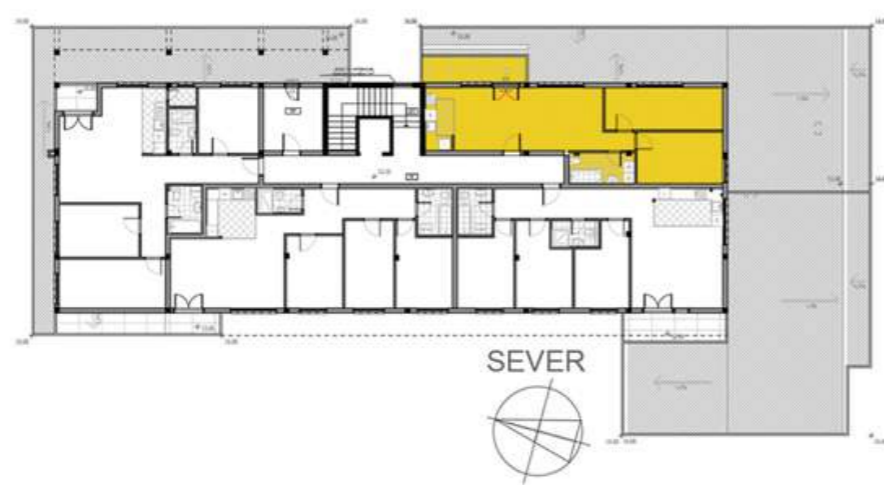


1	HODNIK	5,24 m ²
2	DNEVNI BORAVAK, KUHINJA I TRPEZARIJA	18,73 m ²
3	TERASA	3,09 m ²
4	KUPATILO	3,66 m ²
5	SOBA 1	10,22 m ²
6	SOBA 2	9,81 m ²

NETO POVRŠINA: 50,75 m²



sprat 4 stan 34



1	HODNIK	1,64 m ²
2	KUPATILO	5,39 m ²
3	DNEVNI BORAVAK, KUHINJA I TRPEZARIJA	30,50 m ²

4	SOBA 1	13,41 m ²
5	SOBA 2	12,13 m ²
6	TERASA	7,36 m ²

NETO POVRŠINA: 70,43 m²

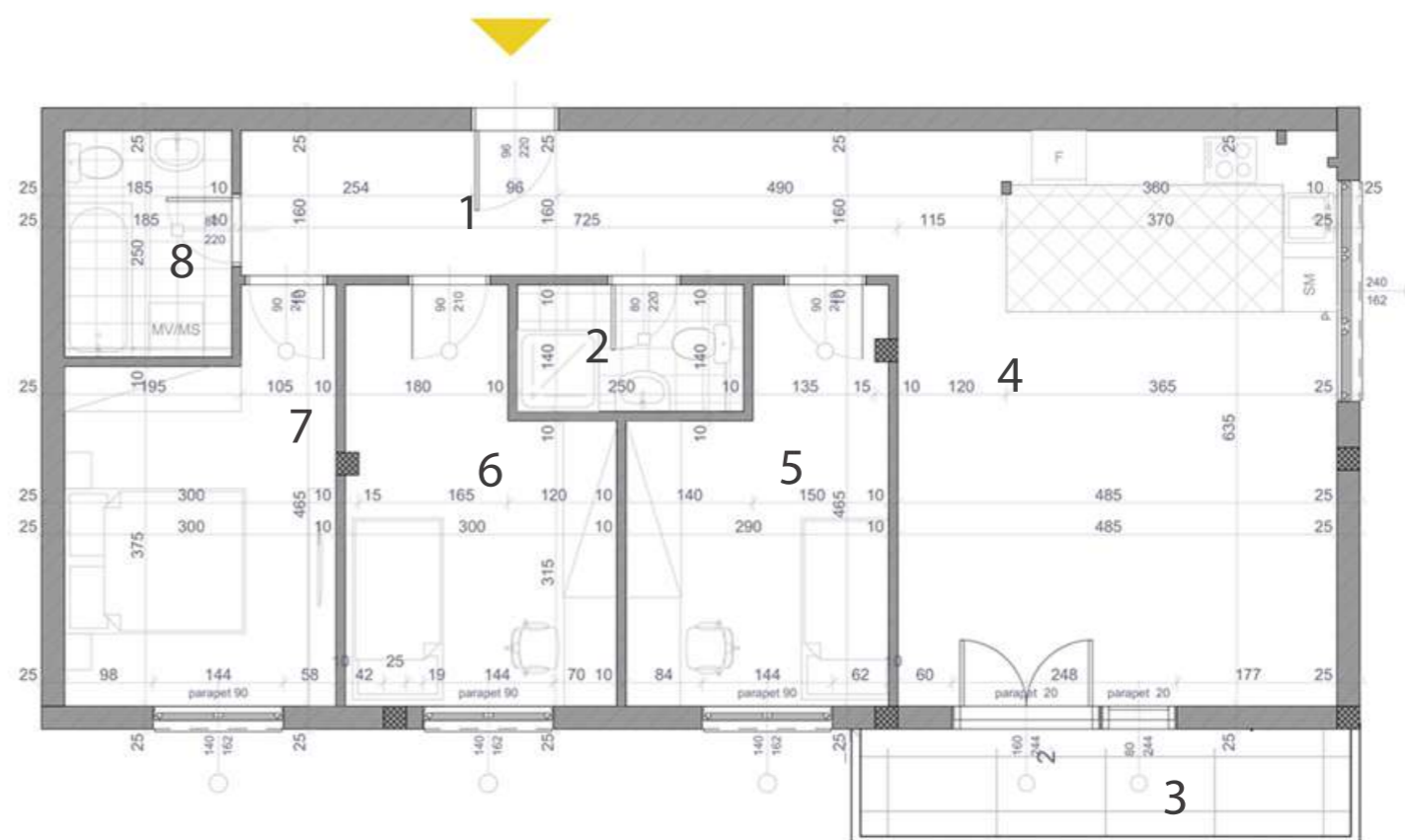
sprat 4 stan 35



1	HODNIK	11,25 m ²
2	KUPATILO 1	3,40 m ²
3	TERASA	7,86 m ²
4	DNEVNI BORAVAK, KUHINJA I TRPEZARIJA	29,48 m ²

5	SOBA 1	11,01 m ²
6	SOBA 2	11,75 m ²
7	SOBA 3	11,83 m ²
8	KUPATILO 2	4,49 m ²

NETO POVRŠINA: 91,06 m²



sprat 4 stan 36



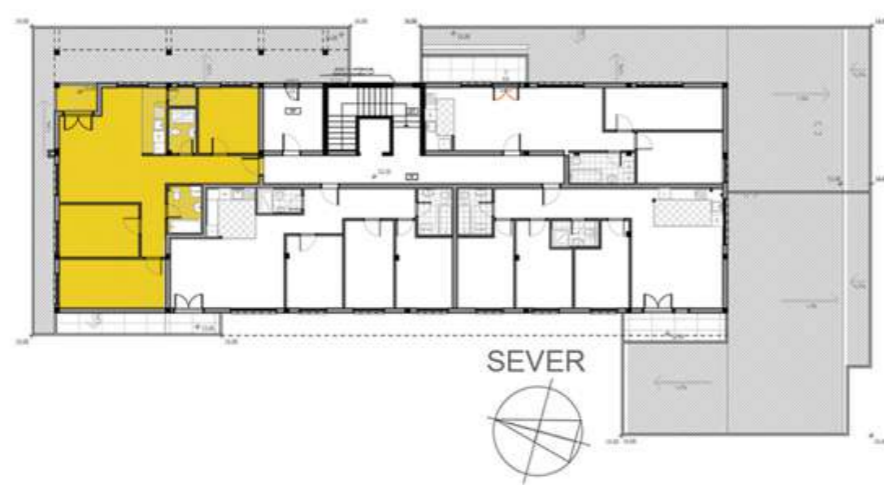
1	HODNIK	13,27 m ²
2	TERASA	9,23 m ²
3	KUPATILO 1	2,94 m ²
4	DNEVNI BORAVAK, KUHINJA I TRPEZARIJA	28,57 m ²

5	SOBA 1	11,16 m ²
6	SOBA 2	11,73 m ²
7	SOBA 3	11,80 m ²
8	KUPATILO 2	4,49 m ²

NETO POVRŠINA: 93,19 m²



sprat 4 stan 37



1	HODNIK	13,98 m ²
2	KUPATILO 1	3,41 m ²
3	SOBA 1	10,86 m ²
4	DNEVNI BORAVAK, KUHINJA I TRPEZARIJA	26,91 m ²
5	OSTAVA	1,44 m ²

6	TERASA	2,90 m ²
7	SOBA 2	11,48 m ²
8	SOBA 3	14,19 m ²
9	KUPATILO 2	4,34 m ²

NETO POVRŠINA: 89,50 m²

